



**Basotect®**

**□ - BASF**

We create chemistry



# BASOTECT

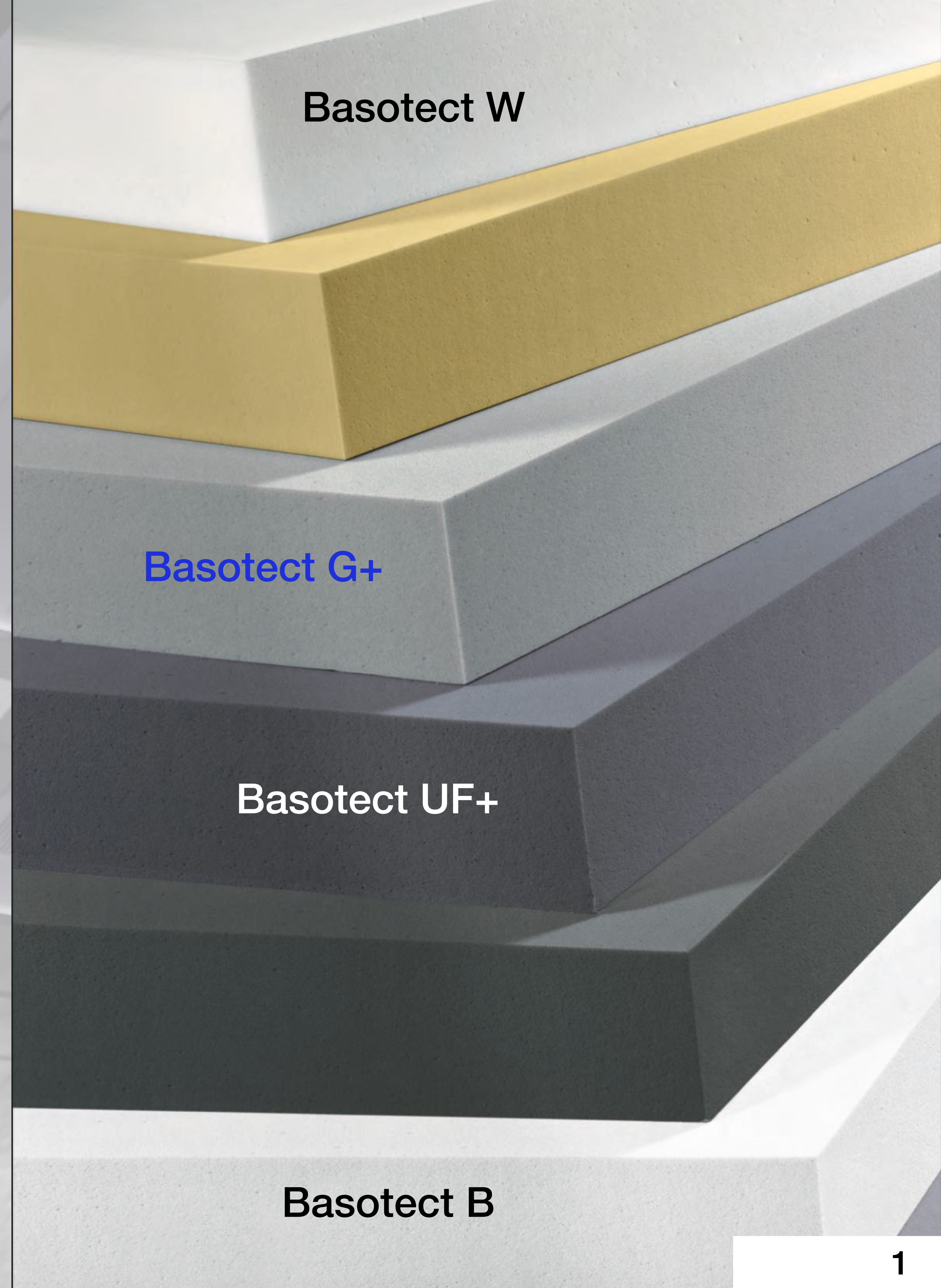
## The Versatile Melamine Resin Foam

Basotect is a product developed by BASF a German chemical engineering company.

BASF is renowned for its ingenuity and innovation in materials engineering solutions.

Basotect combines many requirements for high-performance foam in one product.

Therefore it is highly used in construction and industrial applications, consumer applications, and also in the automotive and transportation sectors.



Basotect W

Basotect G+

Basotect UF+

Basotect B



# **BASOTECT's Advantages**

## **Basotect Offers Many Advantages:**

**High sound absorption capacity**

**Good thermal insulation properties**

**Low weight**

**Abrasiveness**

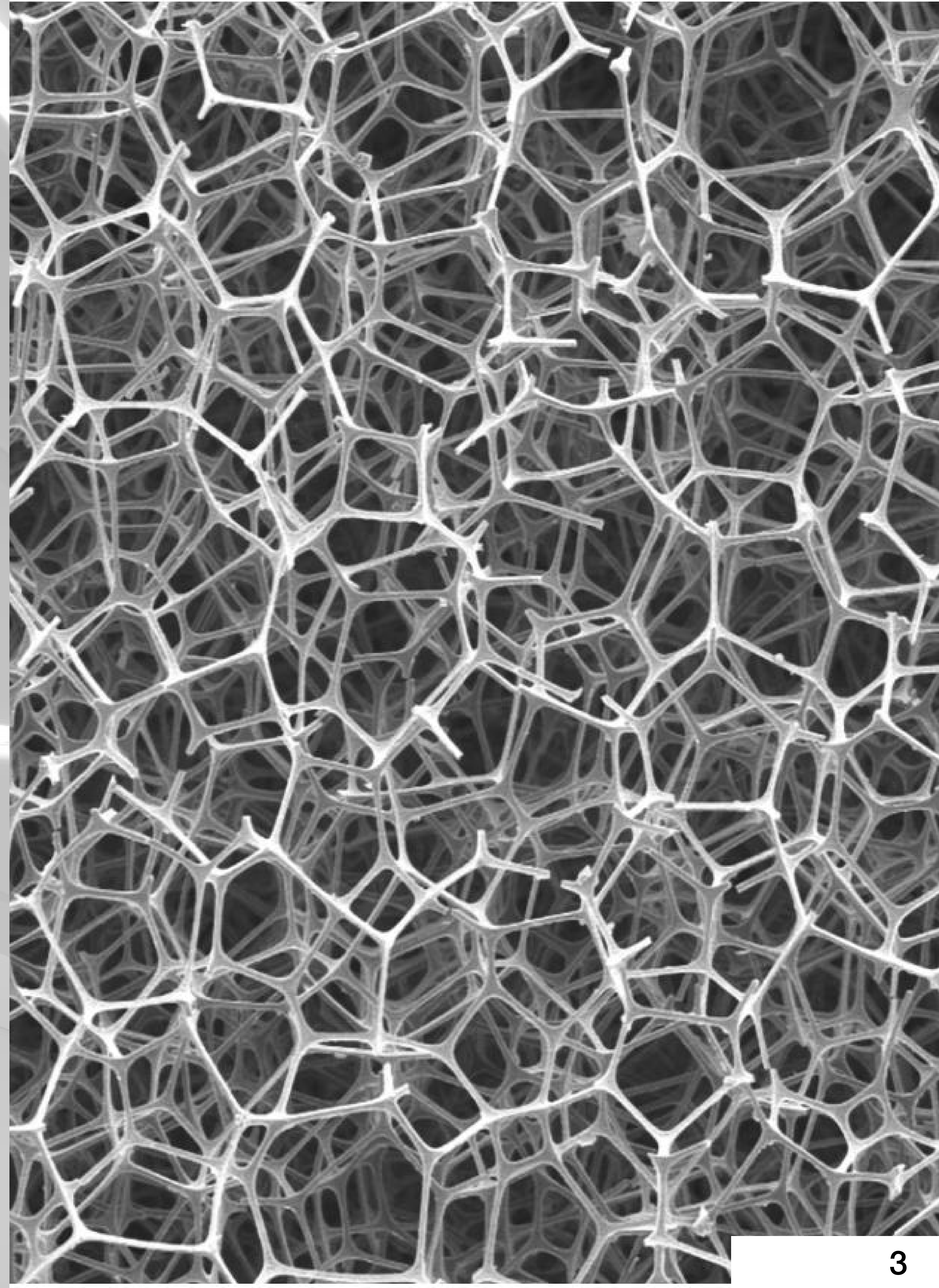
**Flame resistance – without the addition of flame retardants**

**Constant physical properties over a wide temperature range**

# What is BASOTECT ?

Basotect is a flexible, open-cell foam made from melamine resin – a duroplastic synthetic material.

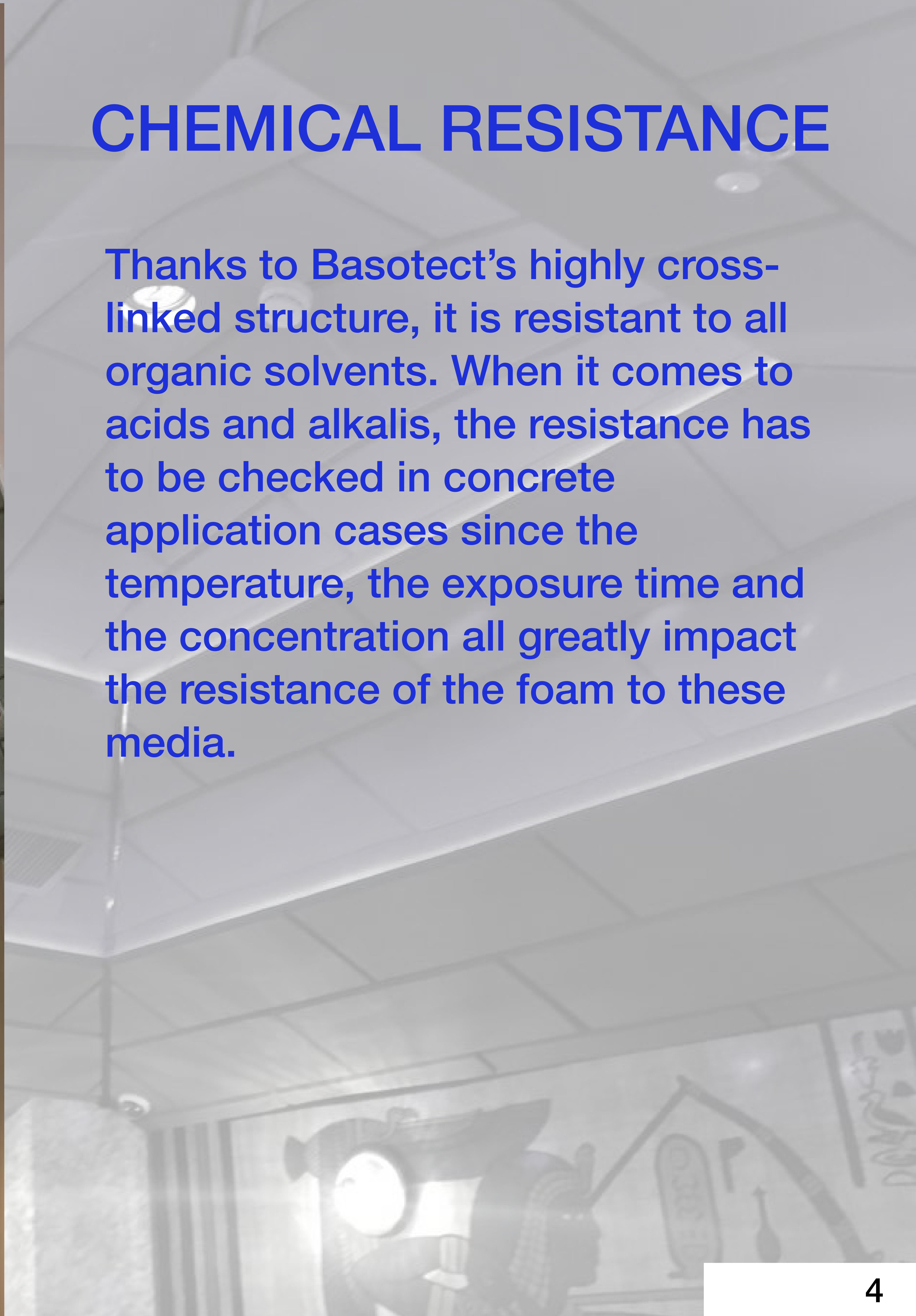
A typical characteristic is the intricate spatial mesh structure that is formed by thin ribs that can therefore be bent into shape easily.





# CHEMICAL RESISTANCE

Thanks to Basotect's highly cross-linked structure, it is resistant to all organic solvents. When it comes to acids and alkalis, the resistance has to be checked in concrete application cases since the temperature, the exposure time and the concentration all greatly impact the resistance of the foam to these media.





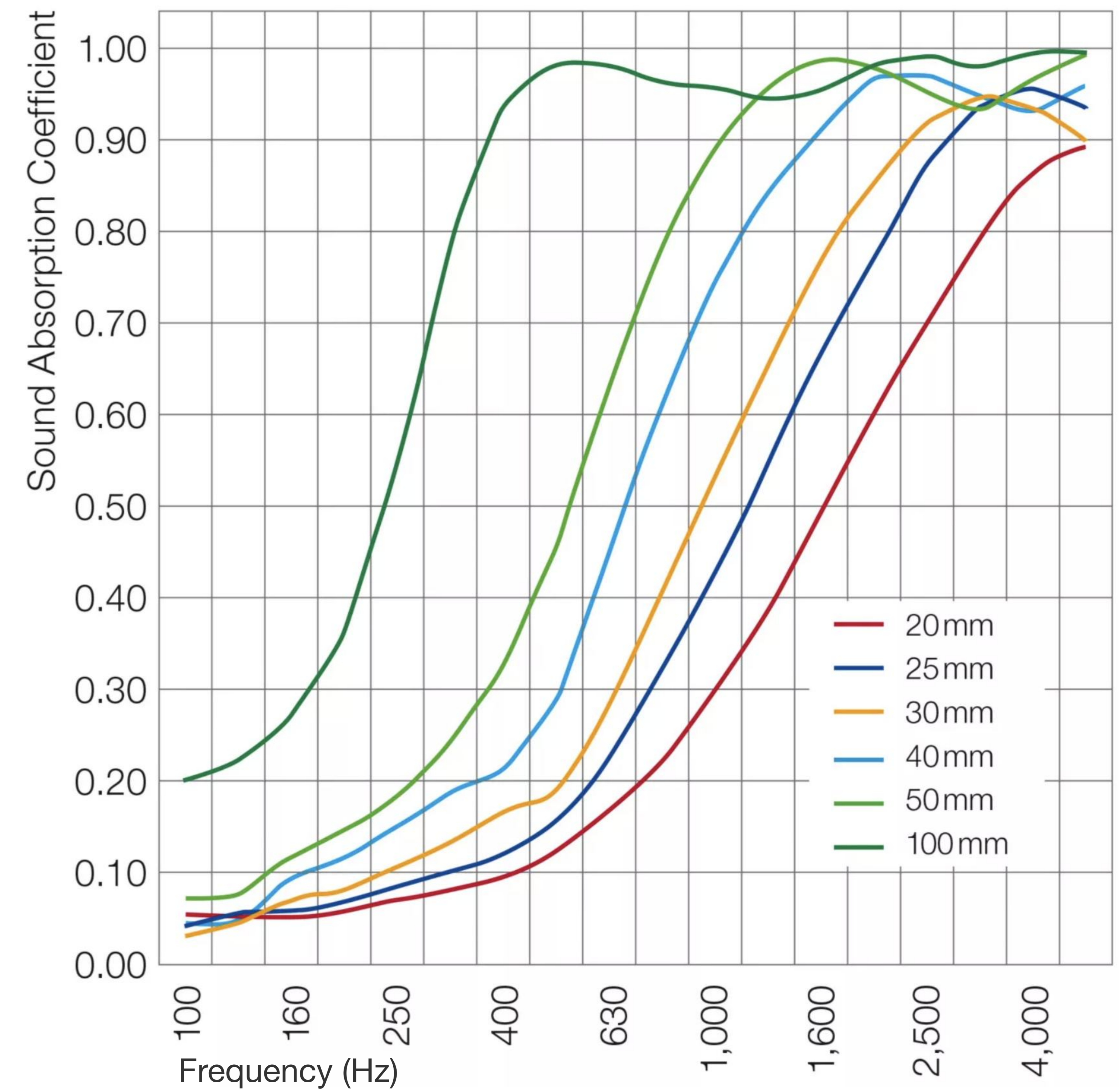
# SOUND ABSORPTION

Basotect's open-cell surface guarantees that sound waves are not reflected as an echo but can penetrate the cell structure unhindered.

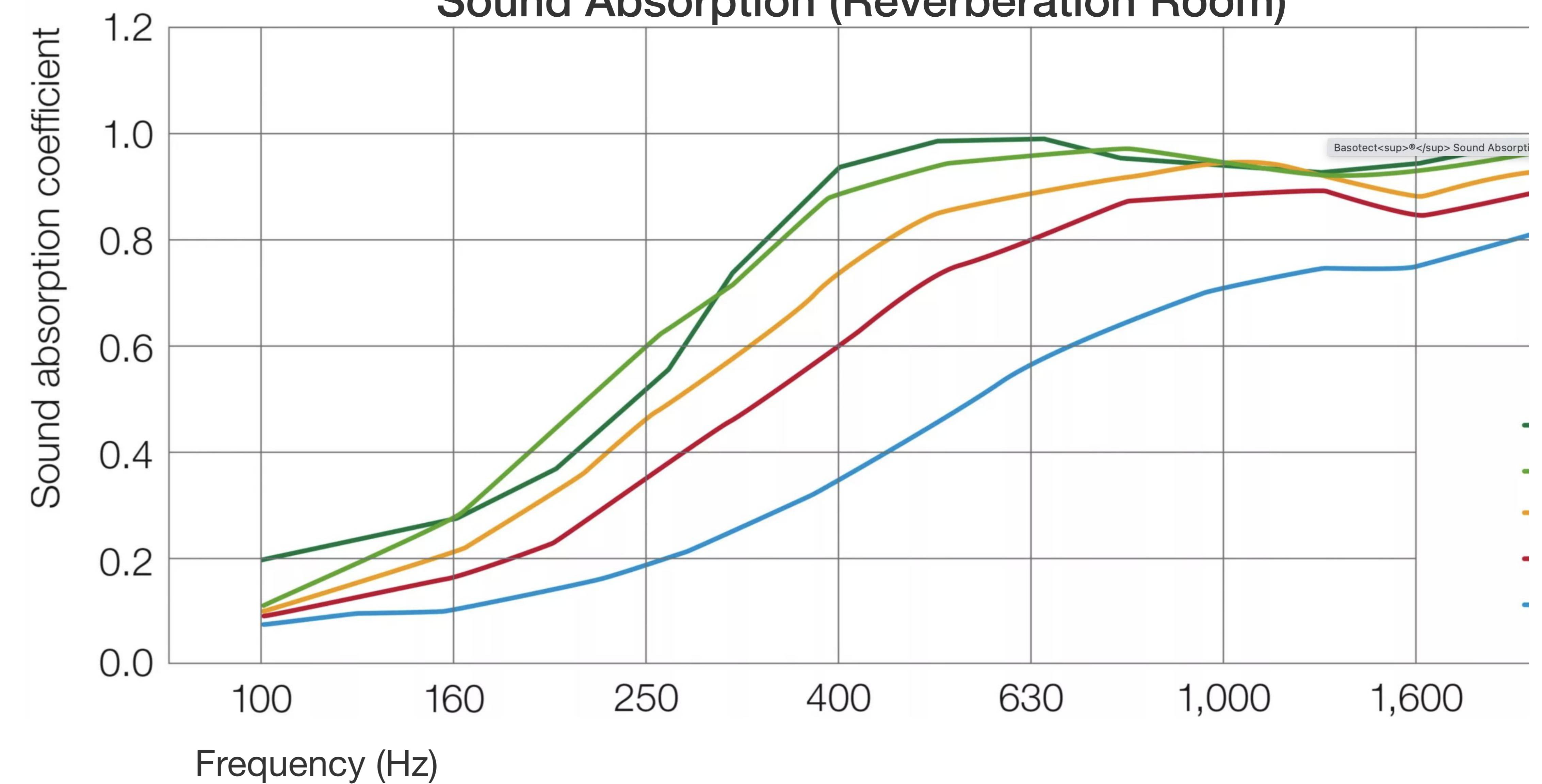
The sound energy is reduced in the cell structure, giving Basotect® an excellent sound absorption capacity.

At low frequencies, improved sound can be achieved by adding layers of a heavier material for example.

Sound Absorption (Impedance Tube)



Sound Absorption (Reverberation Room)





# FIRE BEHAVIOR

Basotect meets the most important international fire safety standards. Basotect's long-term resistance to high temperatures and excellent fire characteristics are based on the melamine resin used.

The high nitrogen content of the resin is responsible for the extremely flame resistant property of the foam without the need to use fire retardants.

Basotect is a thermoset, and thus, in the event of a fire, the material does not melt or produce burning droplets when it comes into contact with flames.



The foam simply chars and produces a small amount of smoke, and there is no afterglow, making Basotect® particularly suitable for applications with high fire safety requirements.

In tests on the fire characteristics required to meet national and international standards, Basotect® achieves the highest classification possible for organic materials.







# ECO-FRIENDLINESS

Basotect® is produced without using halogenated hydrocarbons, flame retardants and/or toxic heavy metals. The product is not hazardous to water. The supplied product is free of blowing agents and is not subject to labeling requirements under the German hazardous material regulations.



## BASOTECT B

**Basotect B is a high performance material especially designed for visible interior applications where it takes advantage of its full potential. The flame resistant foam combines excellent sound absorption and high light reflection.**

**Various options in shaping and coloring opens up a great freedom of design. Hence, Basotect B provides functionality and enables creative acoustic and optical interior designs.**



# BASOTECT UF+

The gray Basotect UF+ is characterized by a very high elasticity and by improved fire properties, which makes this elastic version of Basotect suitable for the construction industry and rail transportation, providing much greater freedom of processing and design.





## BASOTECT G+

Basotect G+ is the light gray product variant and is equal to the white Basotect B regarding thermal conductivity, flame retardancy and simple, mineral fiber-free fabrication.

Its coloration makes it less sensitive to soiling, which also makes Basotect G+ especially suitable for many construction and industrial applications.



# BASOTECT W

The pure-white Basotect cleans efficiently and is certified to OEKO-TEX® Standard 100 in product class I.

Because of its slightly abrasive properties, Basotect W is used as a household cleaning eraser. It is used without additional cleaning agent and works like a soft sandpaper.

When moistened with water, the foam slides easily and so can remove heavy dirt on a variety of surfaces such as tiles, ceramic stove tops, ceramics, doors, leather seats and hubcaps.





**For More Information and Technical Details:  
[info@endlessdynamic.com](mailto:info@endlessdynamic.com)**